

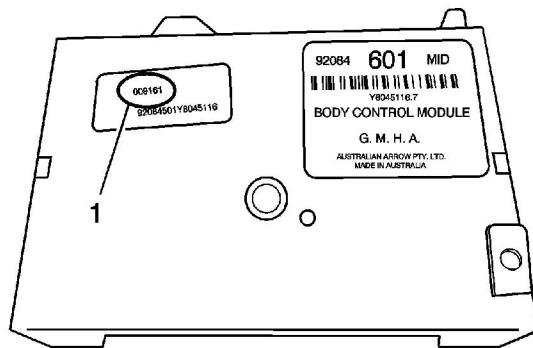
#06-08-47-003: Info - BCM Security Code Location - (Jun 5, 2006)

Subject: BCM Security Code Location

Models: 2004-2006 Pontiac GTO



The purpose of this bulletin is to inform dealers of the location of the security code PIN on body control modules (BCM) supplied as service parts. This code must be used when programming new remote key fobs or when linking the engine control module (ECM), powertrain control module (PCM), and power inverter module (PIM) to the BCM.



The 6-digit numerical code (1) is printed on a plain label which is attached to the body of the replacement BCM as shown in the illustration. Please ensure that the 6-digit numerical code is recorded in relevant records (including the customer's security card). Leave the label attached to the BCM.

GM bulletins are intended for use by professional technicians, NOT a "do-it-yourselfer". They are written to inform these technicians of conditions that may occur on some vehicles, or to provide information that could assist in the proper service of a vehicle. Properly trained technicians have the equipment, tools, safety instructions, and know-how to do a job properly and safely. If a

WE SUPPORT
VOLUNTARY
TECHNICIAN

condition is described, DO NOT assume that the bulletin applies to your vehicle, or that your vehicle will have that condition. See your GM dealer for information on whether your vehicle may benefit from the information.



CERTIFICATION